




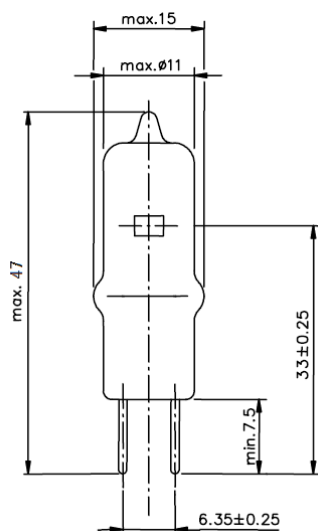
Medical

	Type SH5939 12V 100W G6,35-15
	Ordering - No. 55939
Product Description	Special Halogen Lamp
Features	Quartz Bulb, Exactly positioned Filament
Applications	Medical, Microscope, Analysis

Technical Details

Category	HLWS4-J
Rated Voltage (V)	12
Wattage (W)	max. 110
Luminous Flux (lm)	3000 ± 12%
Average Lifetime (h)	50
Base	G6,35-15
Overall Length (mm)	max. 47
Bulb Diameter (mm)	max. 11,0
Light Center Length (mm)	33 ± 0,25
Operating Position	s90
Packaging Configuration	100 pcs.
Environmental Remark	Product don't contain lead or mercury and is conform with Directive 2002/95/EC "Restriction of the use of certain hazardous substances in electrical and electronic equipment".

Drawing (in mm)



valid from	05.03.2014—V2—PN14/0072
replace for	29.01.2013—V1
file	55939.100.pdf